

Tree Trimming



Tree Maintenance

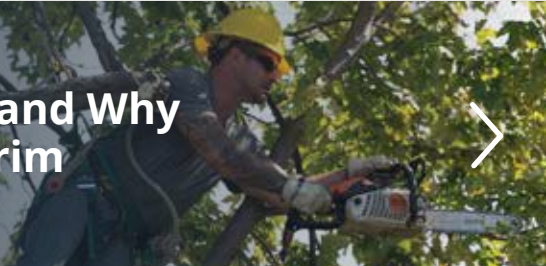
We all love trees, but they sometimes pose a safety or service hazard. See how we keeping your energy secure and our neighborhoods green.

[MISS Dig](#)
[Tree Trimming](#)
[Electrical Safety](#)
[Natural Gas Safety](#)
[Subscribe to Storm Alerts](#)
[DTE Energy Safety Center](#)

Two-thirds of the time our customers spend without power is due to trees. Tree trimming is a common-sense solution to prevent outages from happening in the first place. Our process for trimming trees is designed to foster communication and collaboration with customers every step of the way.



How and Why We Trim



Right Tree, Right Place



Notification

[Trimming & Debris](#)
[Before Planting a Tree](#)
[Service Drop Maintenance](#)
[Safety](#)

Notification

We are committed to communicating with you each step of the way through the tree trimming process.



Here's what to expect:

1. Before we begin trimming, we will send you a [letter](#) letting you know we will be in the area.
2. Shortly after, planners will assess your neighborhood and create a trimming plan.
3. If trimming is needed on your property, we will knock on your door and leave a door hanger describing the necessary trimming. Your planner will leave his or her contact information to answer any questions you may have regarding the work planned for your property.
4. If a tree poses a serious hazard to the power lines, and/or if trimming will damage the tree's health, it may need to be removed. These trees will be marked with two white dots. In this instance, our planners will make every effort to contact you to discuss the removal. After your [tree removal permit](#) is signed, planners will mark the tree with a white "X" indicating it is ready for removal.

Helpful Links

[Letter](#)
[Tree Removal Permit](#)
[Professional Tree Trimming Companies](#)
[Right Tree, Right Place guide](#)
[Trees Suitable for Planting in Southeast Michigan](#)
[Proper Distances Around this Equipment](#)

- Notification
- Trimming & Debris
- Before Planting a Tree
- Service Drop Maintenance
- Safety

Trimming & Debris

Our Tree Trimming program follows industry standards, and provides a balanced solution between reliable power and healthy trees. We work with several [professional tree trimming companies](#), who are trained on safe and environmentally responsible tree care, to complete the tree trimming.

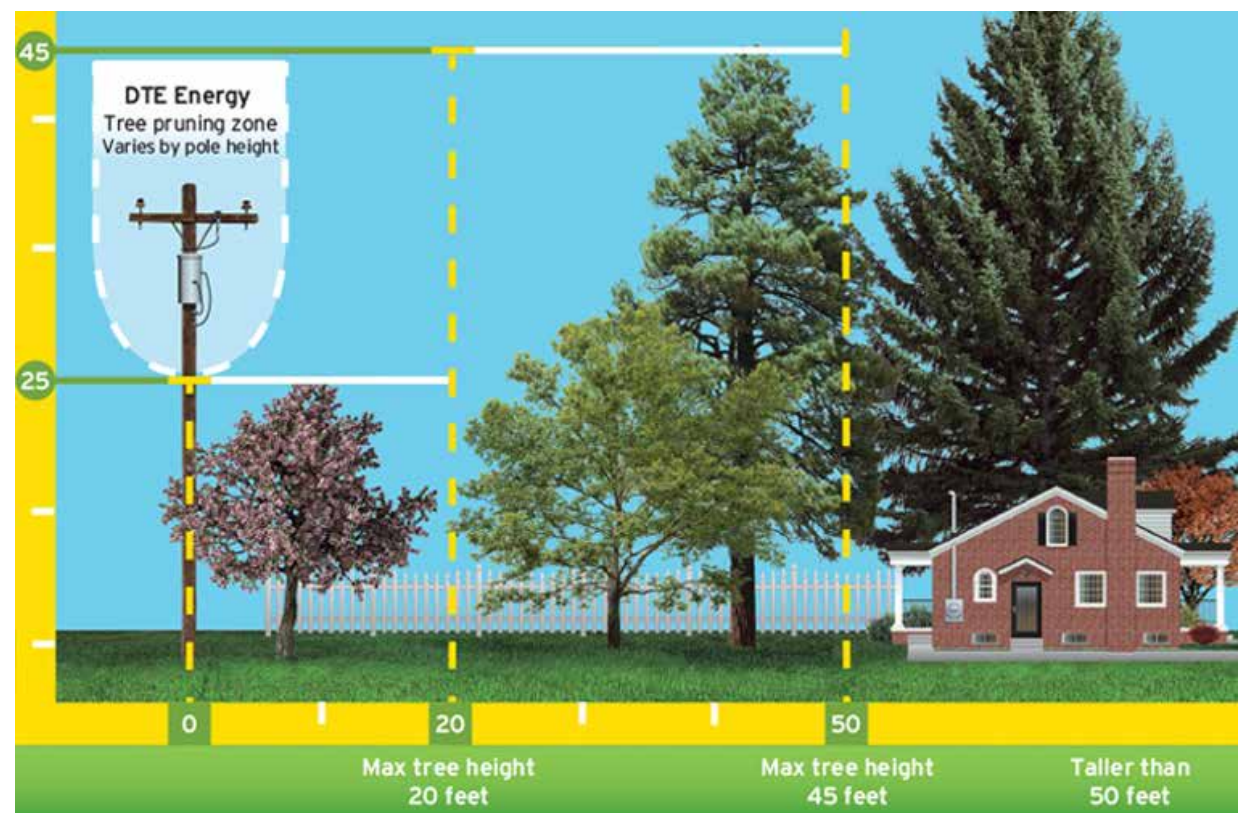


Details on how trees on your property will be trimmed will be provided in the door hanger left at your home.

Small debris, such as leaves and small limbs, will be cleaned and removed. Larger pieces of wood will be cut to firewood length and stacked neatly on the property. If you do not want wood left on your property, please call the number left on your door hanger. *Debris removal policies differ in the aftermath of a storm.*

- Notification
- Trimming & Debris
- Before Planting a Tree
- Service Drop Maintenance
- Safety

Before Planting a Tree



[Click to Enlarge](#)

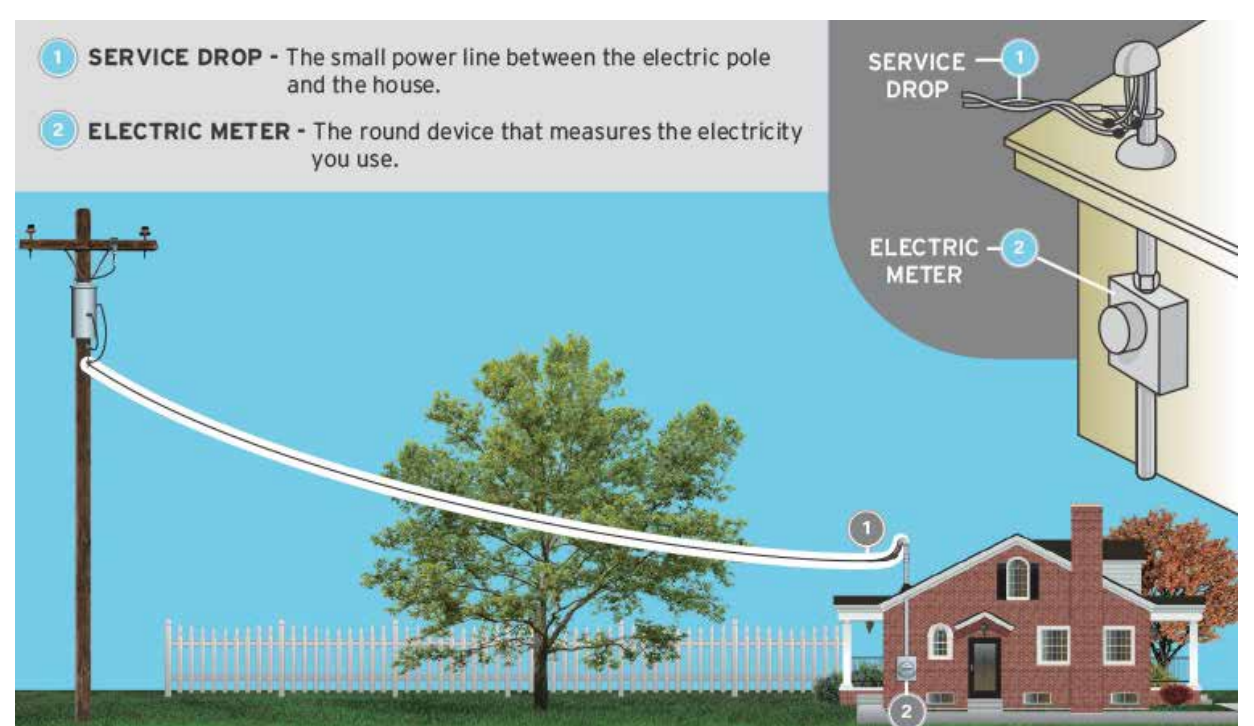
You don't have to choose between reliable service and beautiful trees. By planting the right trees in the right place, you can have both. The [Right Tree, Right Place guide](#) and the list of [Trees Suitable for Planting in Southeast Michigan](#) can help you decide where and what you plant.

Keep in mind other electrical equipment that may be on your property, too. Keeping [proper distances around this equipment](#) ensures safety and can prevent a prolonged power outage for you and your neighbors.

Don't forget to call MISS DIG at 8-1-1 at least three business days before you break ground.

- Notification
- Trimming & Debris
- Before Planting a Tree
- Service Drop Maintenance
- Safety

Service Drop Maintenance



[Click to Enlarge](#)

Your service drop, or the line that runs from the utility pole to your home, is your personal connection to the power grid, and DTE does not trim around these lines. Keeping branches and other brush away from these lines can prevent an outage or other electrical problems. Because these are energized lines, we highly recommend using a professional tree trimming service to perform the work.

- Notification
- Trimming & Debris
- Before Planting a Tree
- Service Drop Maintenance
- Safety

Safety

Trimming trees is not a "do-it-yourself" job, especially when it's around or near a power line. We always recommend using a professional tree trimming service to perform the work.

Kids love to climb trees. But when a tree is close to power lines, you may have more to be concerned about than falling. Teach your kids to walk around a tree and ensure there are no power-lines running through or near before climbing.